

7.5 T2000-500/-600 RF PCB

T2000-500/-600 Parts List (IPN 220-01205-14)

Parts List Amendments			

Ref	Var	IPN	Description	Ref	Var	IPN	Description
C1		015-24100-08	CAP CER 0805 CHIP 1N 10% X7R 50V	C138		015-21680-01	CAP CER 0805 CHIP 6P8 +/-0.25P NPO 50V
C2		015-24100-08	CAP CER 0805 CHIP 1N 10% X7R 50V	C139		015-22330-01	CAP CER 0805 CHIP 33P 5% NPO 50V
C3		015-24100-08	CAP CER 0805 CHIP 1N 10% X7R 50V	C140		015-21680-01	CAP CER 0805 CHIP 6P8 +/-0.25P NPO 50V
C100		015-23150-01	CAP CER 0805 CHIP 150P 5% NPO 50V	C141		015-22470-01	CAP CER 0805 CHIP 47P 5% NPO 50V
*C101	5XX	015-21820-01	CAP CER 0805 CHIP 8P2 +/-0.25P NPO 50V	C142		015-22120-01	CAP CER 0805 CHIP 12P 5% NPO 50V
*C101	5XXL	015-21820-01	CAP CER 0805 CHIP 8P2 +/-0.25P NPO 50V	C145		015-23100-01	CAP CER 0805 CHIP 100P 5% NPO 50V
*C101	6XX	015-22100-01	CAP CER 0805 CHIP 10P +/-0.5P NPO 50V	C146		015-24100-08	CAP CER 0805 CHIP 1N 10% X7R 50V
*C101	6XXL	015-22100-01	CAP CER 0805 CHIP 10P +/-0.5P NPO 50V	C147		015-25100-08	CAP CER 0805 CHIP 10N 10% X7R 50V
C102		015-23150-01	CAP CER 0805 CHIP 150P 5% NPO 50V	C148		015-22100-01	CAP CER 0805 CHIP 10P +/-0.5P NPO 50V
C104		015-06100-08	CAP CER 1206 CHIP 100N 10% X7R 50V	C149		015-23150-01	CAP CER 0805 CHIP 150P 5% NPO 50V
C105		015-21100-01	CAP CER 0805 CHIP 1P0 +/-0.25P NPO 50V	C150		015-23100-01	CAP CER 0805 CHIP 100P 5% NPO 50V
C106		015-22330-01	CAP CER 0805 CHIP 33P 5% NPO 50V	C151		015-06100-08	CAP CER 1206 CHIP 100N 10% X7R 50V
*C107	5XX	015-21390-01	CAP CER 0805 CHIP 3P9 +/-0.25P NPO 50V	C152		015-23100-01	CAP CER 0805 CHIP 100P 5% NPO 50V
*C107	5XXL	015-21390-01	CAP CER 0805 CHIP 3P9 +/-0.25P NPO 50V	#C152A		015-25100-08	CAP CER 0805 CHIP 10N 10% X7R 50V
*C107	6XX	015-21470-01	CAP CER 0805 CHIP 4P7 +/-0.25P NPO 50V	C153		020-57470-10	CAP ELECT AI RDL 4U7 50V LO ESR
*C107	6XXL	015-21470-01	CAP CER 0805 CHIP 4P7 +/-0.25P NPO 50V	#C153A		015-23100-01	CAP CER 0805 CHIP 100P 5% NPO 50V
C108		015-23150-01	CAP CER 0805 CHIP 150P 5% NPO 50V	C154		015-25100-08	CAP CER 0805 CHIP 10N 10% X7R 50V
C109		015-21220-01	CAP CER 0805 CHIP 2P2 +/-0.25P NPO 50V	C155		015-23100-01	CAP CER 0805 CHIP 100P 5% NPO 50V
*C110	5XX	015-22390-01	CAP CER 0805 CHIP 39P 5% NPO 50V	#C156		036-10000-00	RES M/F 0805 CHIP ZERO OHM
*C110	5XXL	015-22390-01	CAP CER 0805 CHIP 39P 5% NPO 50V	C157		015-06100-08	CAP CER 1206 CHIP 100N 10% X7R 50V
*C110	6XX	015-22180-01	CAP CER 0805 CHIP 18P 5% NPO 50V	C158		015-24100-08	CAP CER 0805 CHIP 1N 10% X7R 50V
*C110	6XXL	015-22180-01	CAP CER 0805 CHIP 18P 5% NPO 50V	C174		020-58470-05	CAP ELECT AI RDL 47M 16V 6.3X7MM
*C111	5XX	015-21680-01	CAP CER 0805 CHIP 6P8 +/-0.25P NPO 50V	C175		015-06100-08	CAP CER 1206 CHIP 100N 10% X7R 50V
*C111	5XXL	015-21680-01	CAP CER 0805 CHIP 6P8 +/-0.25P NPO 50V	C176		015-06100-08	CAP CER 1206 CHIP 100N 10% X7R 50V
*C111	6XX	015-21560-01	CAP CER 0805 CHIP 5P6 +/-0.25P NPO 50V	C179		015-25100-08	CAP CER 0805 CHIP 10N 10% X7R 50V
*C111	6XXL	015-21560-01	CAP CER 0805 CHIP 5P6 +/-0.25P NPO 50V	C180		015-06100-08	CAP CER 1206 CHIP 100N 10% X7R 50V
C112		015-21150-01	CAP CER 0805 CHIP 1P5 +/-0.25P NPO 50V	C181		015-06100-08	CAP CER 1206 CHIP 100N 10% X7R 50V
C113		015-21220-01	CAP CER 0805 CHIP 2P2 +/-0.25P NPO 50V	C182		015-23150-01	CAP CER 0805 CHIP 150P 5% NPO 50V
*C114	5XX	015-22390-01	CAP CER 0805 CHIP 39P 5% NPO 50V	C184		015-23150-01	CAP CER 0805 CHIP 150P 5% NPO 50V
*C114	5XXL	015-22390-01	CAP CER 0805 CHIP 39P 5% NPO 50V	C185		015-25100-08	CAP CER 0805 CHIP 10N 10% X7R 50V
*C114	6XX	015-22180-01	CAP CER 0805 CHIP 18P 5% NPO 50V	C186		015-25100-08	CAP CER 0805 CHIP 10N 10% X7R 50V
*C114	6XXL	015-22180-01	CAP CER 0805 CHIP 18P 5% NPO 50V	C187		015-24100-08	CAP CER 0805 CHIP 1N 10% X7R 50V
*C115	5XX	015-22100-01	CAP CER 0805 CHIP 10P +/-0.5P NPO 50V	C188		015-23100-01	CAP CER 0805 CHIP 100P 5% NPO 50V
*C115	5XXL	015-22100-01	CAP CER 0805 CHIP 10P +/-0.5P NPO 50V	C189		015-23470-08	CAP CER 0805 CHIP 470P 10% X7R 50V
*C115	6XX	015-21820-01	CAP CER 0805 CHIP 8P2 +/-0.25P NPO 50V	C190		015-23470-08	CAP CER 0805 CHIP 470P 10% X7R 50V
*C115	6XXL	015-21820-01	CAP CER 0805 CHIP 8P2 +/-0.25P NPO 50V	C191		015-24100-08	CAP CER 0805 CHIP 1N 10% X7R 50V
C117		015-21150-01	CAP CER 0805 CHIP 1P5 +/-0.25P NPO 50V	C192		015-22330-01	CAP CER 0805 CHIP 33P 5% NPO 50V
C118		015-21220-01	CAP CER 0805 CHIP 2P2 +/-0.25P NPO 50V	C193		020-57470-10	CAP ELECT AI RDL 4U7 50V LO ESR
*C119	5XX	015-22390-01	CAP CER 0805 CHIP 39P 5% NPO 50V	C194		015-23150-01	CAP CER 0805 CHIP 150P 5% NPO 50V
*C119	5XXL	015-22390-01	CAP CER 0805 CHIP 39P 5% NPO 50V	C195		015-23150-01	CAP CER 0805 CHIP 150P 5% NPO 50V
*C119	6XX	015-22180-01	CAP CER 0805 CHIP 18P 5% NPO 50V	C197		015-06100-08	CAP CER 1206 CHIP 100N 10% X7R 50V
*C119	6XXL	015-22180-01	CAP CER 0805 CHIP 18P 5% NPO 50V	C198		015-21100-01	CAP CER 0805 CHIP 1P0 +/-0.25P NPO 50V
*C121	5XX	015-21680-01	CAP CER 0805 CHIP 6P8 +/-0.25P NPO 50V	C199		015-24100-08	CAP CER 0805 CHIP 1N 10% X7R 50V
*C121	5XXL	015-21680-01	CAP CER 0805 CHIP 6P8 +/-0.25P NPO 50V	C200		015-25100-08	CAP CER 0805 CHIP 10N 10% X7R 50V
*C121	6XX	015-21560-01	CAP CER 0805 CHIP 5P6 +/-0.25P NPO 50V	C201		015-25100-08	CAP CER 0805 CHIP 10N 10% X7R 50V
*C121	6XXL	015-21560-01	CAP CER 0805 CHIP 5P6 +/-0.25P NPO 50V	C202		015-24100-08	CAP CER 0805 CHIP 1N 10% X7R 50V
*C122	5XX	015-21390-01	CAP CER 0805 CHIP 3P9 +/-0.25P NPO 50V	C204		015-23150-01	CAP CER 0805 CHIP 150P 5% NPO 50V
*C122	5XXL	015-21390-01	CAP CER 0805 CHIP 3P9 +/-0.25P NPO 50V	C205		015-25220-08	CAP CER 0805 CHIP 22N 10% X7R 50V
*C122	6XX	015-21470-01	CAP CER 0805 CHIP 4P7 +/-0.25P NPO 50V	C206		015-06100-08	CAP CER 1206 CHIP 100N 10% X7R 50V
*C122	6XXL	015-21470-01	CAP CER 0805 CHIP 4P7 +/-0.25P NPO 50V	C207		015-25100-08	CAP CER 0805 CHIP 10N 10% X7R 50V
C123		015-23150-01	CAP CER 0805 CHIP 150P 5% NPO 50V	C208		015-25100-08	CAP CER 0805 CHIP 10N 10% X7R 50V
C124		015-21560-01	CAP CER 0805 CHIP 5P6 +/-0.25P NPO 50V	C209		015-25100-08	CAP CER 0805 CHIP 10N 10% X7R 50V
C125		015-21270-01	CAP CER 0805 CHIP 2P7 +/-0.25P NPO 50V	C210		015-25100-08	CAP CER 0805 CHIP 10N 10% X7R 50V
C126		015-21560-01	CAP CER 0805 CHIP 5P6 +/-0.25P NPO 50V	C211		015-23180-01	CAP CER 0805 CHIP 180P 5% NPO 50V
C127		015-22120-01	CAP CER 0805 CHIP 12P 5% NPO 50V	C212		015-21560-01	CAP CER 0805 CHIP 5P6 +/-0.25P NPO 50V
C128		015-22330-01	CAP CER 0805 CHIP 33P 5% NPO 50V	C213		020-58470-05	CAP ELECT AI RDL 47M 16V 6.3X7MM
C129		015-25100-08	CAP CER 0805 CHIP 10N 10% X7R 50V	C214		015-25100-08	CAP CER 0805 CHIP 10N 10% X7R 50V
C130		015-25100-08	CAP CER 0805 CHIP 10N 10% X7R 50V	C215		020-57470-10	CAP ELECT AI RDL 4U7 50V LO ESR
C132		015-23150-01	CAP CER 0805 CHIP 150P 5% NPO 50V	C216		015-25100-08	CAP CER 0805 CHIP 10N 10% X7R 50V
C133		015-22470-01	CAP CER 0805 CHIP 47P 5% NPO 50V	C217		020-58470-05	CAP ELECT AI RDL 47M 16V 6.3X7MM
C134		015-21680-01	CAP CER 0805 CHIP 6P8 +/-0.25P NPO 50V	C218		020-57470-10	CAP ELECT AI RDL 4U7 50V LO ESR
C135		015-22330-01	CAP CER 0805 CHIP 33P 5% NPO 50V	C219		020-57470-10	CAP ELECT AI RDL 4U7 50V LO ESR
C136		015-21680-01	CAP CER 0805 CHIP 6P8 +/-0.25P NPO 50V	C220		022-55100-10	CAP MYLAR AI 10N 5% 63V POTTED
C137		015-23100-01	CAP CER 0805 CHIP 100P 5% NPO 50V	C221		022-57100-02	CAP MYLAR AI 1M 20% 50V POTTED

Ref	Var	IPN	Description	Ref	Var	IPN	Description
R312		036-13680-00	RES M/F 0805 CHIP 680E 5%				
*R313	5XX	032-03330-00	RES M/F 330E 1% 7X2.5MM				
*R313	6XX	032-03330-00	RES M/F 330E 1% 7X2.5MM				
*R314	5XXL	030-52560-20	RES FILM Al 56E 5% 0.4W 4X1.6MM				
*R314	6XXL	030-52560-20	RES FILM Al 56E 5% 0.4W 4X1.6MM				
*R315	5XX	030-52220-20	RES FILM Al 22E 5% 0.4W 4X1.6MM				
*R315	5XXL	030-52220-20	RES FILM Al 22E 5% 0.4W 4X1.6MM				
R316		036-13150-00	RES M/F 0805 CHIP 150E 5%				
R317		036-13100-00	RES M/F 0805 CHIP 100E 5%				
*R318	5XXL	030-52560-20	RES FILM Al 56E 5% 0.4W 4X1.6MM				
*R318	6XXL	030-52560-20	RES FILM Al 56E 5% 0.4W 4X1.6MM				
*R319	5XX	032-32220-00	RES M/F PWR 22E 5% 1W 12X4.5MM				
R320		030-55270-20	RES FILM Al 27K 5% 0.4W 4X1.6MM				
R321		036-16470-00	RES M/F 0805 CHIP 470K 5%				
R322		030-02100-00	RES FILM 10E 5% 0.25W 7X2.5MM				
R323		030-52330-20	RES FILM Al 33E 5% 0.4W 4X1.6MM				
*R323	5XXL	030-52680-20	RES FILM Al 68E 5% 0.4W 4X1.6MM				
R324		030-02180-00	RES FILM 18E 5% 0.25W 7X2.5				
RV324		042-06470-06	RES PRESET 470/500K 25% 6MM ROUND TOP AD				
R325		030-55270-20	RES FILM Al 27K 5% 0.4W 4X1.6MM				
R326		036-16220-00	RES M/F 0805 CHIP 220K 5%				
R327		036-14100-00	RES M/F 0805 CHIP 1K 5%				
R328		030-53150-20	RES FILM Al 150E 5% 0.4W 4X1.6MM				
R329		036-15470-00	RES M/F 0805 CHIP 47K 5%				
R330		036-16220-00	RES M/F 0805 CHIP 220K 5%				
R332		036-13100-00	RES M/F 0805 CHIP 100E 5%				
R333		036-14220-00	RES M/F 0805 CHIP 2K2 5%				
*R334	5XX	036-12220-00	RES M/F 0805 CHIP 22E 5%				
*R334	5XXL	036-12220-00	RES M/F 0805 CHIP 22E 5%				
R337		036-10000-00	RES M/F 0805 CHIP ZERO OHM				
R338		036-15330-00	RES M/F 0805 CHIP 33K 5%				
R339		036-15100-00	RES M/F 0805 CHIP 10K 5%				
R340		036-15100-00	RES M/F 0805 CHIP 10K 5%				
R341		036-15470-00	RES M/F 0805 CHIP 47K 5%				
R342		036-16150-00	RES M/F 0805 CHIP 150K 5%				
R343		036-14470-00	RES M/F 0805 CHIP 4K7 5%				
R344		036-14220-00	RES M/F 0805 CHIP 2K2 5%				
R345		036-14100-00	RES M/F 0805 CHIP 1K 5%				
R346		036-13680-00	RES M/F 0805 CHIP 680E 5%				
R347		036-15100-00	RES M/F 0805 CHIP 10K 5%				
R348		036-14100-00	RES M/F 0805 CHIP 1K 5%				
R418		036-13680-00	RES M/F 0805 CHIP 680E 5%				
R420		036-15390-00	RES M/F 0805 CHIP 39K 5%				
R421		036-15390-00	RES M/F 0805 CHIP 39K 5%				
R422		036-12220-00	RES M/F 0805 CHIP 22E 5%				
R425		036-14100-00	RES M/F 0805 CHIP 1K 5%				
R426		036-11470-00	RES M/F 0805 CHIP 4E7 10%				
R427		036-11470-00	RES M/F 0805 CHIP 4E7 10%				
R428		036-12220-00	RES M/F 0805 CHIP 22E 5%				
R429		036-15270-00	RES M/F 0805 CHIP 27K 5%				
R430		036-14680-00	RES M/F 0805 CHIP 6K8 5%				
R431		036-16100-00	RES M/F 0805 CHIP 100K 5%				
R432		036-12100-00	RES M/F 0805 CHIP 10E 5%				
R433		036-13100-00	RES M/F 0805 CHIP 100E 5%				
R434		036-12220-00	RES M/F 0805 CHIP 22E 5%				
R435		036-15180-00	RES M/F 0805 CHIP 18K 5%				
R436		036-14120-00	RES M/F 0805 CHIP 1K2 5%				
R437		036-14100-00	RES M/F 0805 CHIP 1K 5%				

Variants: 5XX 400-470MHz
 6XX 450-520MHz
 5XXL 410-430MHz low power
 6XXL 450-520MHz low power

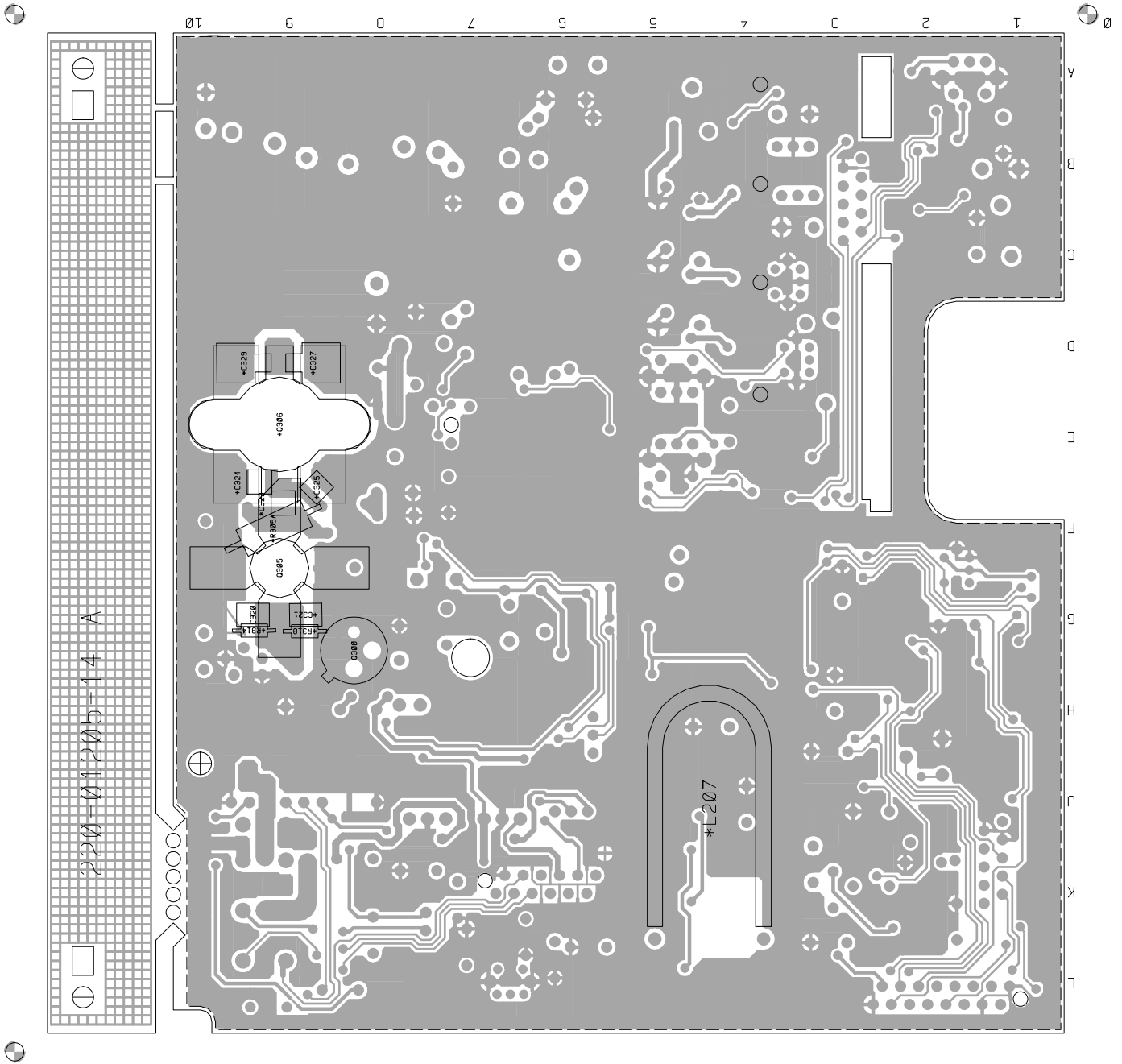
T2000-500/-600 Mechanical & Miscellaneous Parts

IPN	Description	IPN	Description
062-00010-14	CAN 7.5MM SQ X 10.2MM TOKO MC-136 CANS TO BE PLACED OVER L107 L108		
065-00010-11	BEAD FERRITE 4S3 3*1*4MM RED L1, L307, L309, *L314, *L316, L304, L304A		
205-00010-12	CABLE FLAT RBBN 16 CORE 16/7/0.1 GREY		
220-01205-14	PCB T2500 RF 400-520MHZ C735		
240-00020-51	PLUG 12 WAY 2*6 FLAT CABLE TERMN		
240-00020-54	PLUG 16 WAY 2X8 FLAT CABLE TERMN MICROMATCH		
240-02100-11	SKT COAX BNC 3.5MM PNL NO EARTH TAG		
303-23135-01	COVER BTM A1M2505 T2000 PNTD CMLPT		
303-50077-00	CLIP A3M2525 T2000 AUDIO IC AND REG		
308-13103-01	CHASSIS A1M2503 D-CAST T2000 PNTD CMLPT		
316-85094-00	PLATE A4M2160 BNC MTG UK 5X5 SERIES		
319-01164-01	SHIELD A1M2507 DIE CAST T2000 MICROP		
319-01167-00	SHIELD RX A3M2594 T2000		
349-00020-30	SCREW TAPTITE M3X6MM PAN POZI BZ PCB TO CHASSIS		
349-00020-31	SCREW TAPTITE M3X10MM PAN POZI BZ		
349-00020-32	SCREW TAPTITE M3X8MM PAN POZI BZ Q306 =2 BNC PLATE =2 CHASSIS =2		
349-00020-34	SCREW M3*12 PAN POZI TAPTITE BZ MICRO SHEILD TO CHASSIS		
349-00020-48	SCREW M4X25MM PAN POZI TAPTITE II BRIGHT ZINC		
349-00020-49	SCREW TAPTITE M4X35MM PAN POZI BZ TOP COVER		
352-00010-35	NUT 8-32 UNC HEX RF PWR XSTR MTG NUT FOR Q305		
356-00010-05	TAG SOLDER 4MM LONG M6144/4.2 PLACED ON Q305 STUD AND SOLDERED TO GND		
360-01053-01	PLUG A3M2563 PLASTIC D-RANGE BLANKING		
362-01027-01	GASKET A4M2564 RUBBER SEAL T2000 MAIN CONN		
362-01028-00	GASKET A4M2652 130X3MM CONDUCT STRIPS T2000		
362-01058-00	GASKET TO-126 11.1X7.9 D2.4 SIL INSULATION		
T2000-500/600 LOW POWER VARIANT PARTS			
220-01287-00	PCB T2000 UHF FINAL TRANSTR REPLACEMENT		

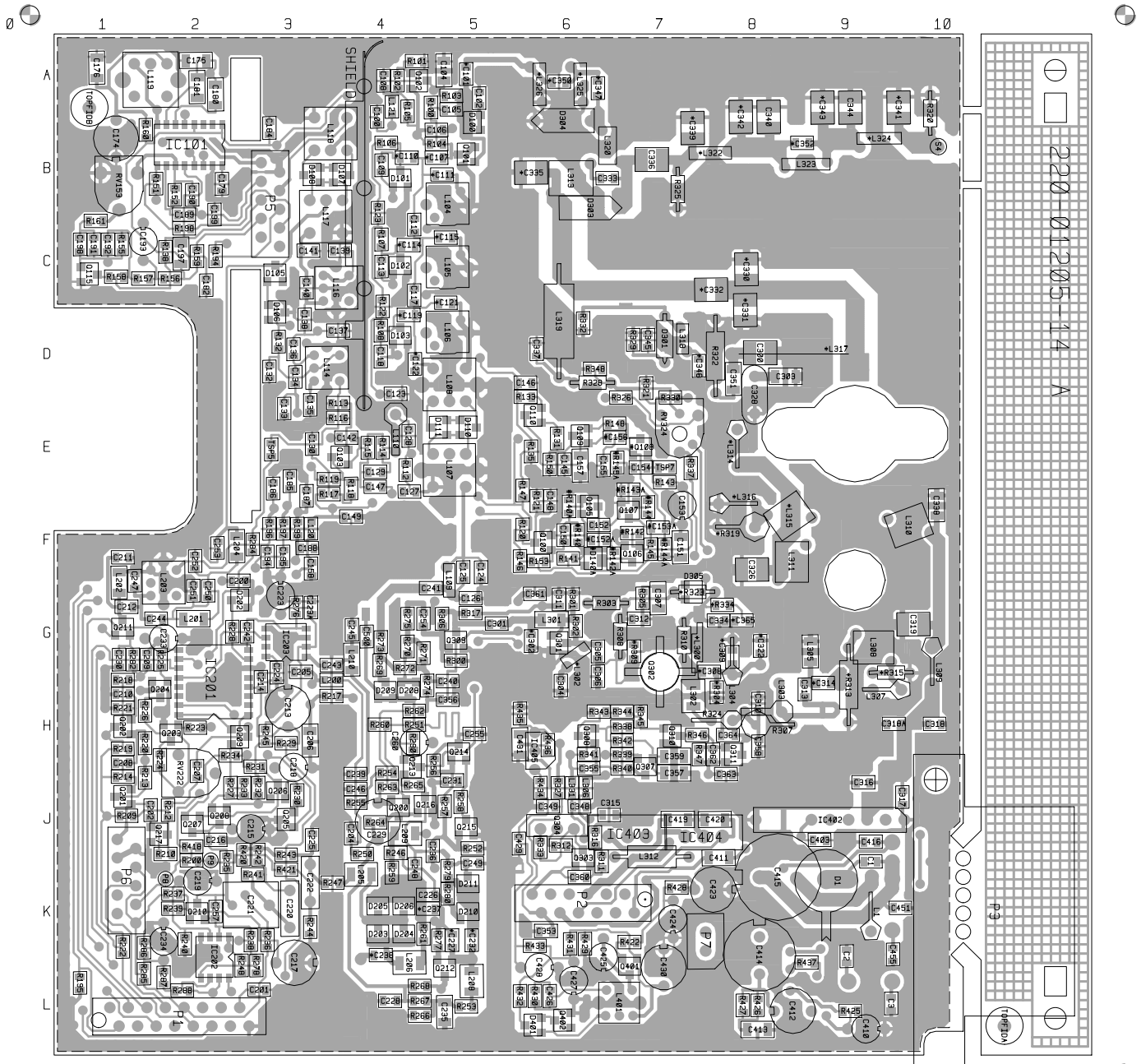
T2000-500/-600 Grid Reference Index (IPN 220-01205-14)

Device	PCB	Circuit	Device	PCB	Circuit	Device	PCB	Circuit	Device	PCB	Circuit
C1	1:J9	1-V9	C192	1:C1	1-M7	*C308	1:G8	1-K0	C428	1:L6	1-Q8
C2	1:K9	1-U8	C193	1:C1	1-N7	*C309	1:G8	1-K0	C429	1:J6	1-P8
C3	1:L10	1-V8	C194	1:F3	1-A7	C310	1:H8	1-M1	C430	1:L7	1-M9
C100	1:A4	1-U3	C195	1:F3	1-A8	C311	1:G6	1-H1	C431	1:H6	1-R8
*C101	1:A5	1-T3	C197	1:C2	1-O7	C312	1:G7	1-K1	C451	1:K10	1-V8
C102	1:A5	1-S2	C198	1:C1	1-M6	C313	1:H9	1-M0	C455	1:K10	1-V8
C104	1:A5	1-S3	C199	1:B2	1-M7	*C314	1:G9	1-M0	C500	1:G4	1-F1
C105	1:A5	1-S3	C200	1:F3	1-B5	C315	1:J6	1-M1			
C106	1:B5	1-R3	C201	1:L3	1-A4	C316	1:J9	1-P1	D1	1:K9	1-V9
*C107	1:B5	1-R3	C202	1:J2	1-C7	C317	1:J10	1-P1	D100	1:A5	1-S2
C108	1:A4	1-T3	C204	1:J4	1-D2	C318	1:H10	1-O1			1-S2
C109	1:B4	1-Q3	C205	1:G3	1-C2	C318A	1:H10	1-O1	D101	1:B4	1-Q3
*C110	1:B4	1-Q3	C206	1:H3	1-H5	C319	1:G10	1-O1	D102	1:C4	1-P3
*C111	1:B5	1-P3	C207	1:H2	1-B6	C320	2:G9	1-N0	D103	1:D4	1-N3
C112	1:C4	1-P3	C208	1:H1	1-C7	*C321	2:G9	1-N0	D105	1:C3	1-T6
C113	1:C4	1-P3	C209	1:G2	1-C8	*C322	1:G8	1-L0	D106	1:D3	1-U6
*C114	1:C4	1-P3	C210	1:H1	1-E7	*C323	2:F9	2-D7	D107	1:B4	1-S6
*C115	1:C5	1-O3	C211	1:F1	1-E7	*C324	2:E9	2-E7			1-S5
C117	1:C4	1-O3	C212	1:G1	1-F7	*C325	2:F9	2-F7	D108	1:B3	1-S5
C118	1:D4	1-O3	C213	1:H3	1-D4	C326	1:F8	1-P1			1-S5
*C119	1:D4	1-N3	C214	1:G3	1-C4	*C327	2:D9	2-F7	D110	1:E5	1-K3
*C121	1:C5	1-N2	C215	1:J3	1-E4	C328	1:D8	1-R1			1-K3
*C122	1:D4	1-M3	C216	1:J2	1-E5	*C329	2:D9	2-F7	D111	1:E5	1-K3
C123	1:D4	1-J3	C217	1:L3	1-F4	*C330	1:C8	2-G7			1-K2
C124	1:F5	1-I2	C218	1:H3	1-F5	*C331	1:C8	1-R0	#D140A	1:F6	1-P4
C125	1:F5	1-H3	C219	1:K2	1-G4	*C332	1:C8	1-R0	D202	1:G3	1-C5
C126	1:G5	1-H2	C220	1:K3	1-G5	C333	1:B6	1-T0	D203	1:K4	1-A0
C127	1:E4	1-K5	C221	1:K2	1-G5	C334	1:G8	1-J1	D204	1:K4	1-A0
C128	1:E4	1-K5	C222	1:J3	1-H3	*C335	1:B6	1-S0	D205	1:K4	1-A0
C129	1:E4	1-M5	C223	1:G3	1-F3	C336	1:B7	1-T0	D206	1:K4	1-A0
C130	1:E3	1-M5	C223A	1:G3	1-E3	C337	1:D6	1-T1	D208	1:H4	1-F0
C132	1:D3	1-U6	C224	1:G3	1-E2	C338	1:F10	1-O1	D209	1:H4	1-F1
C133	1:E3	1-O5	C225	1:J3	1-A1	*C339	1:B7	1-U0	D210	1:K5	1-C0
C134	1:D3	1-O6	C226	1:K5	1-C0	C340	1:A8	1-U0	D211	1:K5	1-B1
C135	1:E3	1-P5	*C227	1:K5	1-C0	*C341	1:A10	1-V0	D301	1:D7	1-R1
C136	1:D3	1-P6	C228	1:L4	1-D1	*C342	1:A8	1-U0	D303	1:B6	1-S0
C137	1:D4	1-P5	C229	1:J4	1-D1	*C343	1:A9	1-V0	D304	1:A6	1-T0
C138	1:D3	1-P6	C230	1:G1	1-E7	C344	1:A9	1-V0	D305	1:G7	1-L2
C139	1:C4	1-Q5	C231	1:J5	1-E1	C345	1:D7	1-R1			1-L2
C140	1:C3	1-Q6	*C232	1:K5	1-C0	*C346	1:D7	1-R0	D401	1:L6	1-P9
C141	1:C3	1-Q5	C233	1:G2	1-F8	*C347	1:A6	1-T1			1-P9
C142	1:E4	1-L5	C234	1:K2	1-J3	C348	1:J6	1-U2			
C145	1:E6	1-T4	C235	1:L5	1-C1	C349	1:J6	1-V2	IC101	1:B2	1-K6
C146	1:D6	1-U4	C236	1:J5	1-E0	*C350	1:A6	1-T1			1-L7
C147	1:E4	1-N5	*C237	1:K5	1-C0	C351	1:D8	1-P1			1-O7
C148	1:F6	1-O4	*C238	1:K4	1-B0	*C352	1:B9	1-U0	IC201	1:G2	1-B4
C149	1:F4	1-L4	C239	1:H4	1-F2	C353	1:K6	1-V2	IC202	1:K2	
C150	1:F6	1-O4	C240	1:G5	1-G1	C355	1:H6	1-I2			1-G4
C151	1:F7	1-Q5	C241	1:F5	1-G3	C356	1:H5	1-G1			1-J4
C152	1:F6	1-Q4	C242	1:G3	1-B3	C357	1:H7	1-H1	IC203	1:G3	1-E2
#C152A	1:F6	1-P4	C243	1:G4	1-E3	C358	1:H8	1-M1	IC402	1:J9	1-S8
C153	1:F7	1-Q4	C244	1:G2	1-G7	C359	1:H7	1-H1	IC403	1:J7	1-K9
#C153A	1:F7	1-R4	C245	1:G4	1-F2	C360	1:K6	1-K1	IC404	1:J8	1-K8
C154	1:E7	1-S4	C246	1:J4	1-E2	C361	1:G6	1-G2	IC405	1:H6	1-Q8
C155	1:E6	1-S4	C247	1:F1	1-F7	C362	1:H8	1-J2			
#C156	1:E7	1-S4	C248	1:J4	1-B1	C363	1:H8	1-I1	L1	1:K9	1-U9
C157	1:E6	1-T5	C249	1:J5	1-B1	C364	1:H8	1-K2	L104	1:B5	1-Q2
C158	1:F3	1-K4	C250	1:G2	1-G7	*C365	1:G8	1-J0	L105	1:C5	1-P2
C174	1:B1	1-J8	C251	1:G2	1-G7	C403	1:J9	1-S8	L106	1:D5	1-N2
C175	1:A2	1-K8	C252	1:F2	1-H7	C410	1:L9	1-S9	L107	1:E5	1-J3
C176	1:A1	1-K8	C253	1:F2	1-H7	C411	1:J8	1-T8	L108	1:D5	1-L3
C179	1:B2	1-M7	C254	1:G4	1-G0	C412	1:L8	1-T9	L109	1:F5	1-H3
C180	1:A2	1-L8	C255	1:H5	1-F1	C413	1:L8	1-T8	L110	1:E4	1-L5
C181	1:A2	1-L7	C257	1:K2	1-F4	C414	1:K8	1-U9	L114	1:D3	1-P5
C182	1:C2	1-N6	C260	1:H4	1-B2	C415	1:K8	1-U9	L116	1:C4	1-Q5
C184	1:B3	1-M8	C300	1:D8	1-Q1	C416	1:J9	1-U8	L117	1:B3	1-R5
C185	1:E3	1-I6	C301	1:G5	1-H0	C419	1:J7	1-J8	L118	1:B3	1-T5
C186	1:E3	1-J7	*C302	1:G6	1-H0	C420	1:J8	1-K8	L119	1:A2	1-K8
C187	1:E3	1-N8	C303	1:D8	1-Q1	C423	1:K8	1-K9	L120	1:F3	1-L4
C188	1:F3	1-A6	C304	1:H6	1-I0	C424	1:K7	1-L9	L121	1:A4	1-T3
C189	1:B2	1-K6	C305	1:G6	1-I0	C425	1:K6	1-N8	L200	1:G4	1-D2
C190	1:B2	1-K7	C306	1:G6	1-J0	C426	1:L6	1-O9	L201	1:G2	1-G7
C191	1:C1	1-M6	C307	1:G7	1-I1	C427	1:L6	1-P8	L202	1:F1	1-F7

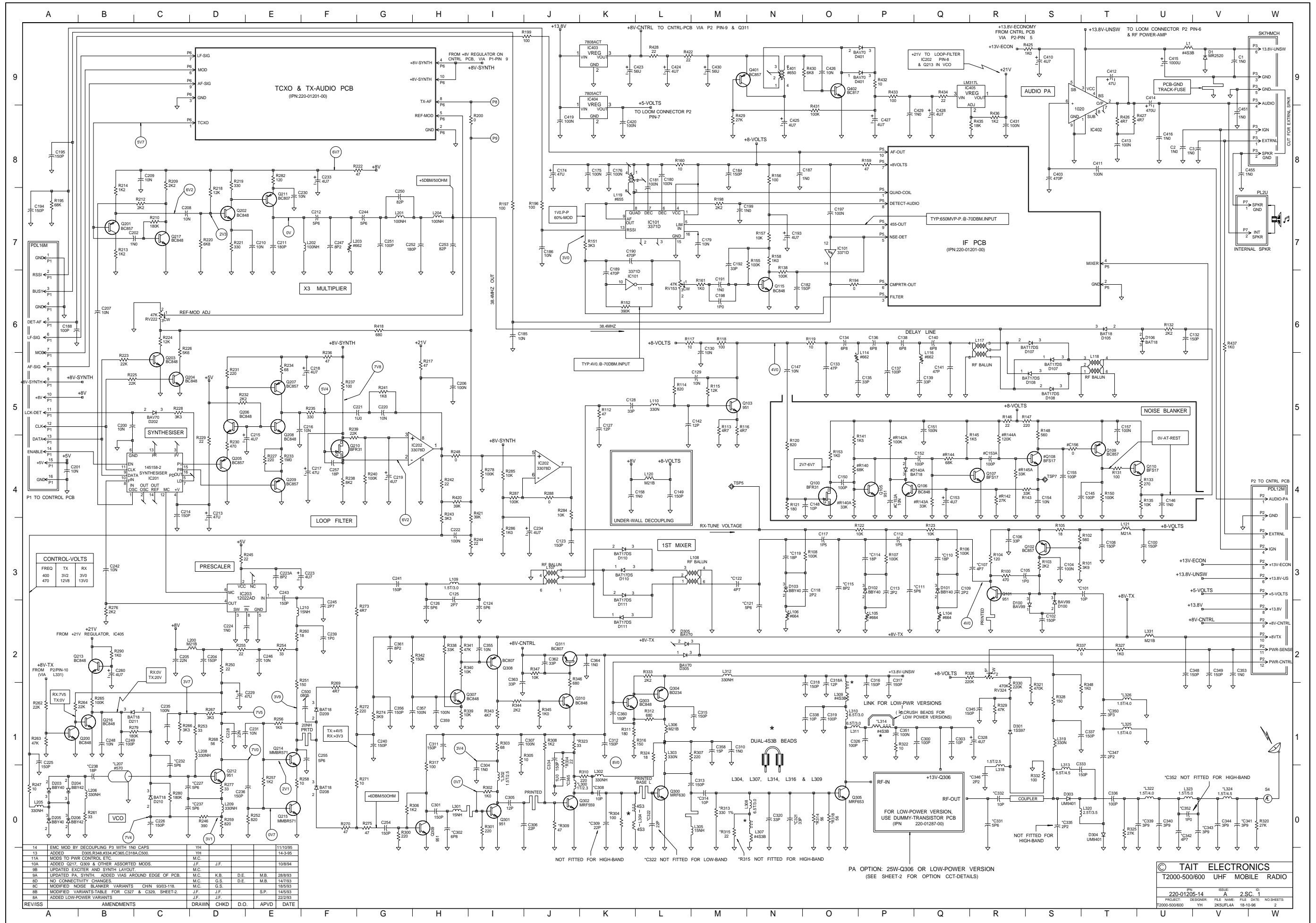
Device	PCB	Circuit	Device	PCB	Circuit	Device	PCB	Circuit	Device	PCB	Circuit
L203	1:F2	1-F7	Q300	2:G8	1-L0	R212	1:J2	1-C7	R302	1:G6	1-I0
L204	1:F2	1-H7	Q301	1:G6	1-I0	R213	1:J1	1-B7	R303	1:G7	1-I1
L205	1:K4	1-A0	Q302	1:G7	1-J0	R214	1:J1	1-B7	*R304	1:H8	1-K0
L206	1:L4	1-B0	Q303	1:J6	1-K1	R217	1:H4	1-H5	R305	1:G7	1-I1
*L207	2:K5	1-B0	Q304	1:J6	1-L1	R218	1:G1	1-D7	*R305A	2:F9	2-E7
L208	1:L5	1-D1	Q305	2:F9	1-O0	R219	1:H1	1-D8	R306	1:G5	1-G0
L209	1:J4	1-D0	*Q306	2:E9	2-F7	R220	1:H1	1-D7	*R307	1:H8	1-M1
L210	1:G4	1-E2	Q307	1:H7	1-H1	R221	1:H1	1-D7	R308	1:G7	1-J1
*L300	1:G7	1-J0	Q308	1:H6	1-I2	RV222	1:H2	1-C6	*R309	1:G7	1-J0
L301	1:G6	1-H0	Q309	1:G5	1-H0	R222	1:K1	1-G8	R310	1:G7	1-K0
*L302	1:G6	1-I0	Q310	1:H7	1-J1	R223	1:H2	1-B5	R311	1:J6	1-K1
L302	1:H7	1-K0	Q311	1:H8	1-J2	R224	1:H2	1-C6	R312	1:J6	1-L1
L303	1:H8	1-L1	Q401	1:L7	1-N9	R225	1:G2	1-B5	*R313	1:G9	1-M0
L304	1:G8	1-L0	Q402	1:L6	1-O9	R226	1:H1	1-C5	*R314	2:G9	1-O0
L305	1:G9	1-M0				R227	1:J2	1-E4	*R315	1:G9	1-M0
L306	1:J6	1-L1	R100	1:A5	1-R3	R228	1:G2	1-C5	R316	1:J6	1-K1
L307	1:H10	1-N0	R101	1:A4	1-S3	R229	1:H3	1-D4	R317	1:G5	1-H0
L308	1:G10	1-N0	R102	1:A4	1-S3	R230	1:J3	1-D4	*R318	2:G9	1-O0
L309	1:G10	1-O1	R103	1:A5	1-S3	R231	1:H3	1-D5	*R319	1:F8	2-E6
L310	1:F9	1-O1	R104	1:B5	1-R3	R232	1:J3	1-D5	R320	1:B10	1-W0
L311	1:F8	1-O1	R105	1:A4	1-S3	R233	1:J3	1-E4	R321	1:D7	1-S1
L312	1:J7	1-M2	R106	1:B4	1-Q3	R234	1:H2	1-E5	R322	1:D8	1-P1
L313	1:B6	1-S0	R107	1:C4	1-P3	R235	1:J2	1-F5	R323	1:G7	1-J1
*L314	1:E8	1-P1	R108	1:D4	1-O3	R236	1:K3	1-F5	RV324	1:E7	1-R2
*L315	1:F8	2-D7	R112	1:E4	1-K5	R237	1:K2	1-F5	R324	1:H8	1-L1
*L316	1:F8	2-D6	R113	1:D4	1-M5	R238	1:K3	1-F4	R325	1:B7	1-T0
*L317	1:D9	2-F8	R114	1:E4	1-L5	R239	1:K2	1-F4	R326	1:D7	1-R2
L318	1:D7	1-R0	R115	1:E4	1-M5	R240	1:K2	1-G4	R327	1:J6	1-T2
L319	1:C6	1-S1	R116	1:E4	1-M5	R241	1:K3	1-G5	R328	1:D7	1-S1
L320	1:B6	1-S0	R117	1:E3	1-L6	R242	1:J3	1-H4	R329	1:D7	1-R1
*L322	1:B8	1-U0	R118	1:E4	1-M6	R243	1:J3	1-H3	R330	1:D7	1-R1
L323	1:B9	1-U0	R119	1:E3	1-O6	R244	1:K3	1-I3	R332	1:D6	1-S0
*L324	1:B10	1-V0	R120	1:F6	1-N4	R245	1:H3	1-D3	R333	1:J6	1-L2
*L325	1:A6	1-T1	R121	1:F6	1-N4	R246	1:J4	1-D0	*R334	1:G8	1-J1
*L326	1:A6	1-T1	R122	1:C4	1-P3	R247	1:K4	1-A0	R337	1:E7	1-T2
L331	1:J6	1-U2	R123	1:B4	1-Q3	R248	1:L3	1-H4	R338	1:H7	1-H2
L401	1:L7	1-N9	R131	1:E6	1-T4	R250	1:J4	1-D2	R339	1:H7	1-H1
			R132	1:D3	1-U6	R251	1:H4	1-E1	R340	1:H7	1-H2
P1	1:L1		R133	1:D6	1-U4	R252	1:J5	1-E0	R341	1:H6	1-H2
P2	1:K7		R135	1:E6	1-U4	R253	1:L5	1-D1	R342	1:H7	1-H2
P3	1:L10		R138	1:C2	1-N6	R254	1:H4	1-E2	R343	1:H6	1-I1
P5	1:B3		#R140	1:F6	1-O4	R255	1:J4	1-D2	R344	1:H7	1-I1
P6	1:J1		#R140A	1:F6	1-O4	R256	1:H5	1-E1	R345	1:H7	1-J1
P7	1:K8		R141	1:F6	1-O4	R257	1:J5	1-E0	R346	1:H7	1-J1
P8	1:K2	1-I9	#R142	1:F7	1-R4	R258	1:J5	1-E0	R347	1:H7	1-J2
P9	1:J2	1-I8	#R142A	1:F7	1-P4	R259	1:K4	1-D0	R348	1:D6	1-T1
			R143	1:E7	1-S4	R260	1:H4	1-E2	R418	1:J2	1-G6
Q100	1:F6	1-O4	#R143A	1:E7	1-Q4	R261	1:K4	1-B0	R420	1:J3	1-H4
Q101	1:B5	1-R3	#R144	1:F7	1-Q4	R262	1:H4	1-A1	R421	1:K3	1-I3
Q102	1:A4	1-S3	#R144A	1:F7	1-R4	R263	1:J4	1-A1	R422	1:K7	1-L9
Q103	1:E4	1-M5	R145	1:F7	1-Q4	R264	1:J4	1-A1	R425	1:L9	1-S9
Q105	1:F6	1-P4	#R145A	1:E7	1-R4	R265	1:J4	1-B1	R426	1:L8	1-T8
Q106	1:F7	1-P4	R146	1:F6	1-R5	R266	1:L4	1-C1	R427	1:L8	1-T8
Q107	1:F7	1-R4	R147	1:E6	1-S5	R267	1:L4	1-D1	R428	1:K7	1-L9
#Q108	1:E7	1-S4	R148	1:E7	1-S5	R268	1:L4	1-D1	R429	1:K6	1-M8
Q109	1:E6	1-T4	R150	1:E6	1-T4	R269	1:G4	1-F1	R430	1:L6	1-O9
Q110	1:E6	1-U4	R151	1:B2	1-K7	R270	1:G4	1-F0	R431	1:K6	1-O8
Q115	1:C1	1-N6	R152	1:B2	1-K6	R271	1:G4	1-G0	R432	1:L6	1-P9
Q200	1:J4	1-A1	RV153	1:B1	1-L6	R272	1:G4	1-G1	R433	1:K6	1-P9
Q201	1:J1	1-B7	R153	1:F6	1-O4	R273	1:G4	1-G2	R434	1:J6	1-Q9
Q202	1:H1	1-D7	R155	1:C1	1-N7	R274	1:H5	1-G1	R435	1:H6	1-R8
Q203	1:H2	1-C5	R156	1:C2	1-N8	R275	1:G4	1-G0	R436	1:H6	1-R8
Q204	1:H2	1-C5	R157	1:C1	1-N7	R276	1:G3	1-B2	R437	1:L9	1-V6
Q205	1:J3	1-D4	R158	1:C1	1-N7	R277	1:K5	1-D0			
Q206	1:J3	1-D5	R159	1:C2	1-P8	R278	1:L3	1-I4	SHIELD	1:D4	
Q207	1:J2	1-E5	R160	1:B2	1-L8	R279	1:K5	1-C1	S4	1:B10	1-W0
Q208	1:J2	1-E5	R161	1:C1	1-M6	R280	1:K5	1-C0			
Q209	1:H3	1-E4	R194	1:C2	1-O6	R282	1:G1	1-E8	TSP5	1:E3	1-M4
Q210	1:K2	1-F4	R195	1:L1	1-A7	R284	1:F3	1-J4	TSP7	1:E7	1-S4
Q211	1:G1	1-E7	R196	1:F3	1-J7	R285	1:L1	1-I4			
Q212	1:L5	1-D0	R197	1:F3	1-I7	R286	1:K1	1-I3			
Q213	1:H4	1-B2	R198	1:C2	1-M7	R287	1:L2	1-I4			
Q214	1:H5	1-E1	R199	1:F3	1-J9	R288	1:L2	1-J4			
Q215	1:J5	1-E0	R200	1:J2	1-I8	R290	1:H4	1-B2			
Q216	1:J5	1-B1	R209	1:J1	1-C8	R300	1:G5	1-G0			
Q217	1:J2	1-C7	R210	1:J2	1-C7	R301	1:G6	1-I0			



T2000-500/-600 RF PCB (IPN 220-01205-14) - Bottom Side



T2000-500/-600 RF PCB (IPN 220-01205-14) - Top Side



REV/ISS	AMENDMENTS	DRAWN	CHKD	D.O.	APVD	DATE
14	EMC MOD BY DECOUPLING P3 WITH 1N0 CAPS	YH				11/1/95
13	ADDED D205, R248, R254, IC265, C219A, C200	YH				14-3-95
11A	MODS TO PWR CONTROL ETC.	M.C.				10/8/94
10A	ADDED Q217, Q309 & OTHER ASSORTED MODS.	J.F.	J.F.			10/8/94
9B	UPDATED EXCITER AND SYNTH LAYOUT.	M.C.				
9A	UPDATED PA SYNTH. ADDED VIAS AROUND EDGE OF PCB.	M.C.	K.B.	D.E.	M.B.	28/8/93
8D	NO CONNECTIVITY CHANGES.	M.C.	G.S.	D.E.	M.B.	14/7/93
8C	MODIFIED NOISE BLANKER VARIANTS CHN 3303-118.	M.C.	G.S.			18/5/93
8B	MODIFIED VARIANTS TABLE FOR Q307 & Q309. SHEET 2.	J.F.	J.F.		S.P.	14/5/93
8A	ADDED LOW-POWER VARIANTS	J.F.	J.F.			22/2/93

© TAIT ELECTRONICS
T2000-500/600 UHF MOBILE RADIO

IPN: 220-01205-14
ISSUE: 7.5.11
PAGE: 2 OF 2
PROJECT: 2200-500/600
DESIGNER: YH
FILE NAME: 2K5UFL4A
FILE DATE: 18-10-96
NO SHEETS: 2

